

CCG Organisational Structure Charts

October 2020



Governing Board

CCG GOVERNING BOARD MEMBERS

Dr Linda Collie	Clinical Leader & Chief Clinical Officer, Elected	Dr Elizabeth Fellows	Chair of Governing Board, Elected Clinical Executive
Dr Simon Simonian	Elected Clinical Executive	Andy Silvester	Deputy Chair & Lay Member
Dr Carsten Lesshaft	Elected Clinical Executive	Jackie Powell	Lay Member
Dr Nick Moore	Elected Clinical Executive	Margaret Geary	Lay Member
Karen Atkinson	Registered Nurse	Graham Love	Lay Member
Dr Tahwinder Upile	Secondary Care Doctor	Innes Richens	Chief of Health & Care Portsmouth
Dave Scarborough	Elected Practice Manager	Michelle Spandley	Chief Finance Officer
Helen Atkinson	Director of Public Health	David Williams	Chief Executive, Portsmouth City Council
Alison Jeffery	Director of Children's Services		

Top Level CCG Direct Structure

Dr Linda Collie
Clinical Chief Officer

Michelle Spandley
Chief Financial Officer

Financial strategy & governance
Financial management & reporting
Performance & Planning
Contracting leadership
Provider Relationship Mgt
Procurement
Information Governance (incl SIRO)
Use of Estate & sustainability
Business intelligence
Contracting
ICT
CSU/COMPACT/PCC overall SLA mgt

Innes Richens
Chief of Health & Care Portsmouth

Strategy & blueprint delivery
Transformation programmes
Commissioning
Delegated primary care commissioning
Quality, Safety & Safeguarding
Patient and Public Engagement
Medicines management
Communications & Engagement
Membership engagement

Statutory Functions of DASS Planning,
commissioning & delivery of social
services for adults

Tracy Sanders
Managing Director

Deputy to Chief Clinical Officer
Operating model development
System & Organisational Change mgt
Board & Leadership Development
Staff Engagement
HR management
Learning & Development mgt
Constitutional Matters
Governance & Decision Making Argts
Governing Board & Committees mgt
Risk Management
FOIs & Complaints
HQ Management
Accommodation
Health and Safety
Equality & Diversity
Legal services

Chief of Health & Care Portsmouth

Innes Richens
Chief of Health & Care
Portsmouth

Suzannah Rosenberg
Director of Transition
0.2 wte

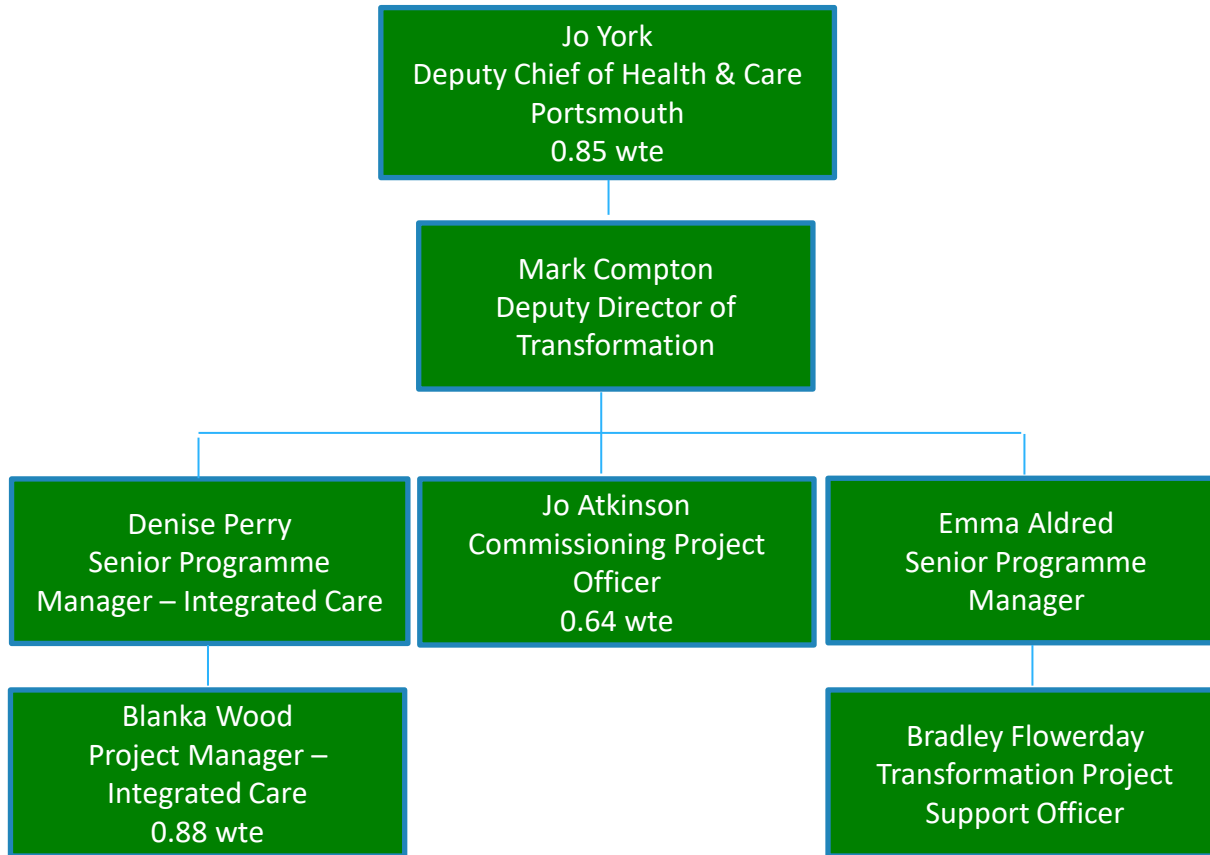
Jo York
Deputy Chief of Health &
Care Portsmouth
0.85 wte

Simon Cooper
Director (Medicines
Optimisation)

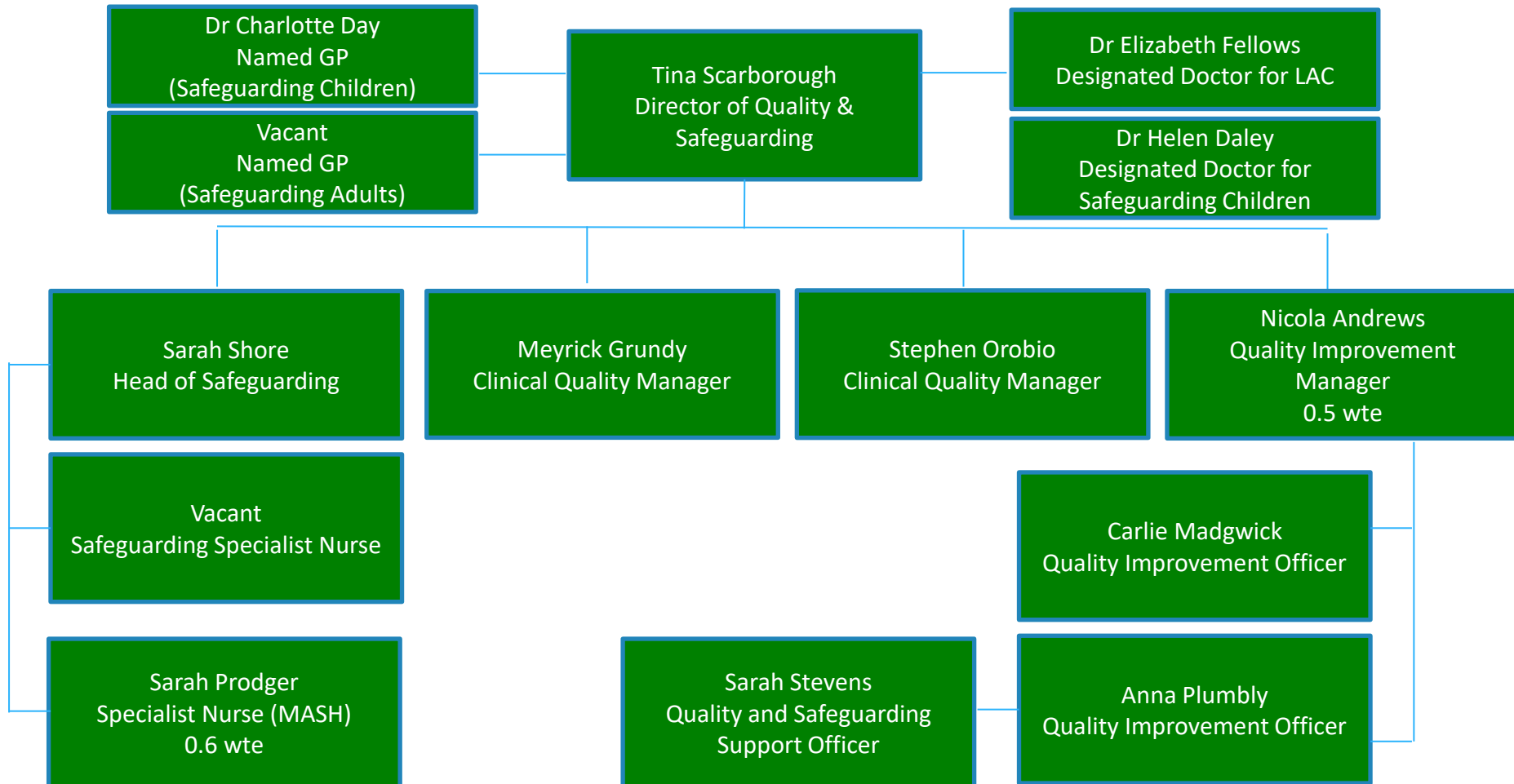
Tina Scarborough
Director of Quality &
Safeguarding

Angela Dryer
Deputy Director of Adult
Services

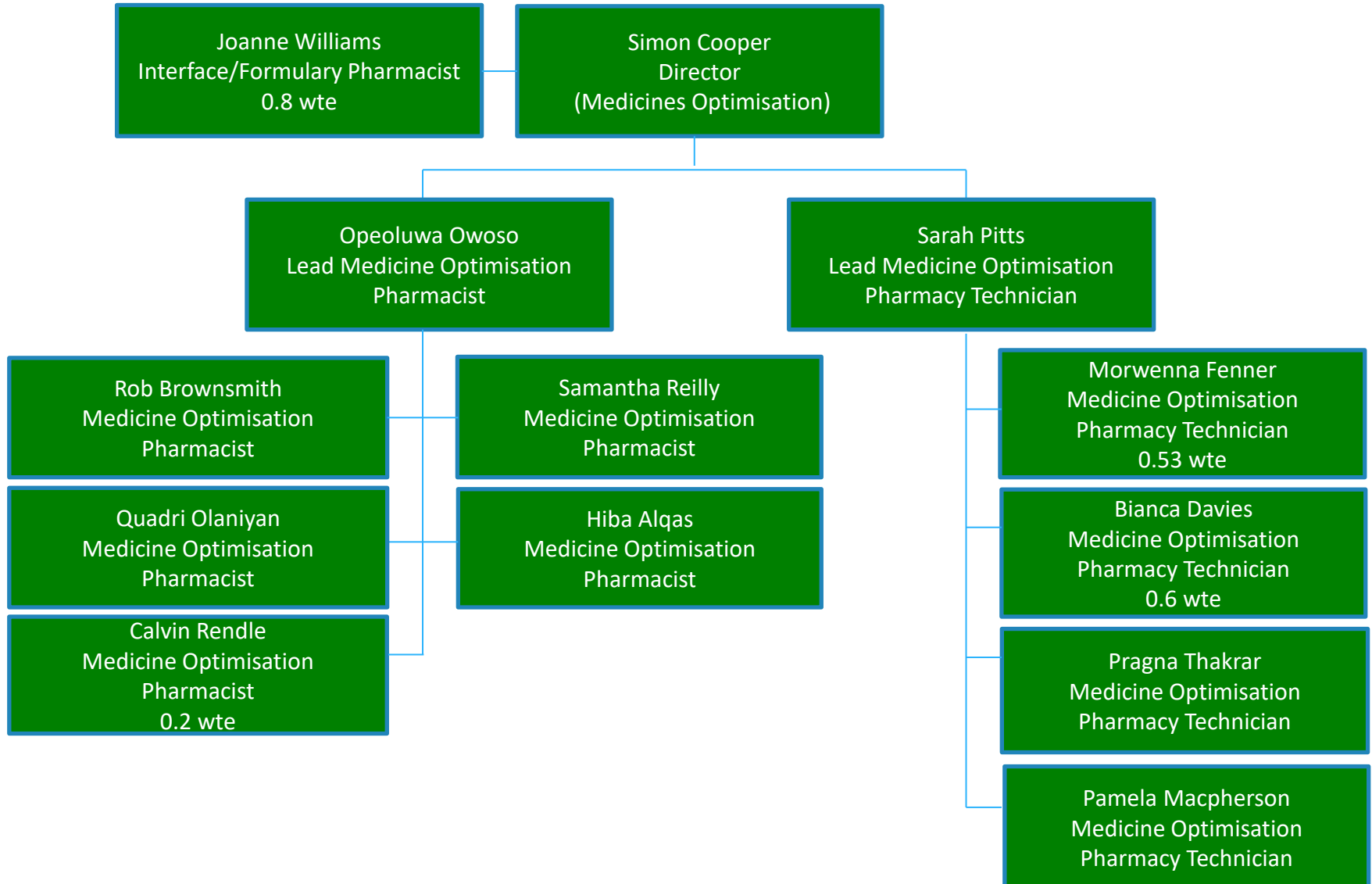
Director (New Models of Care)



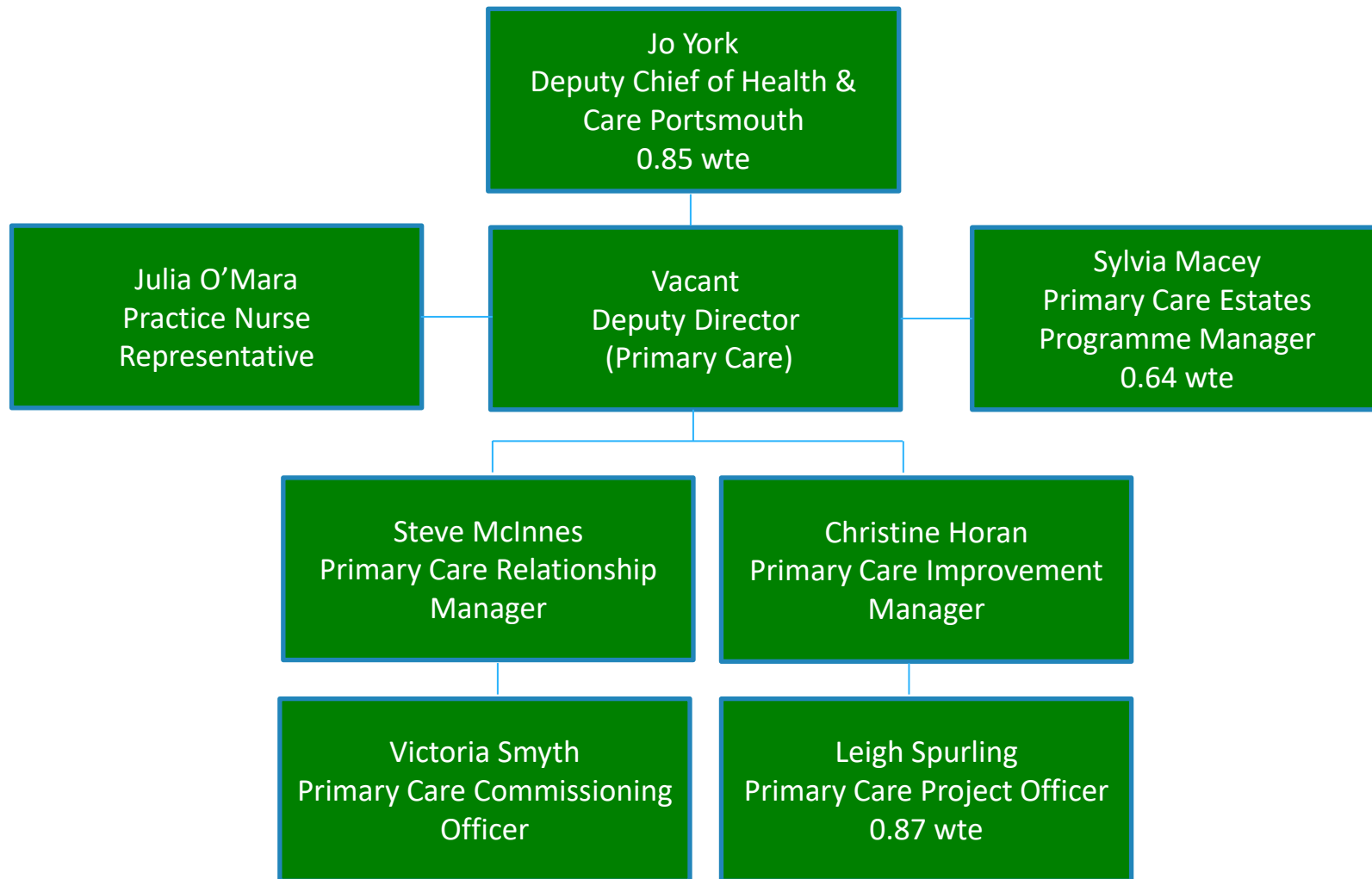
Quality & Safeguarding



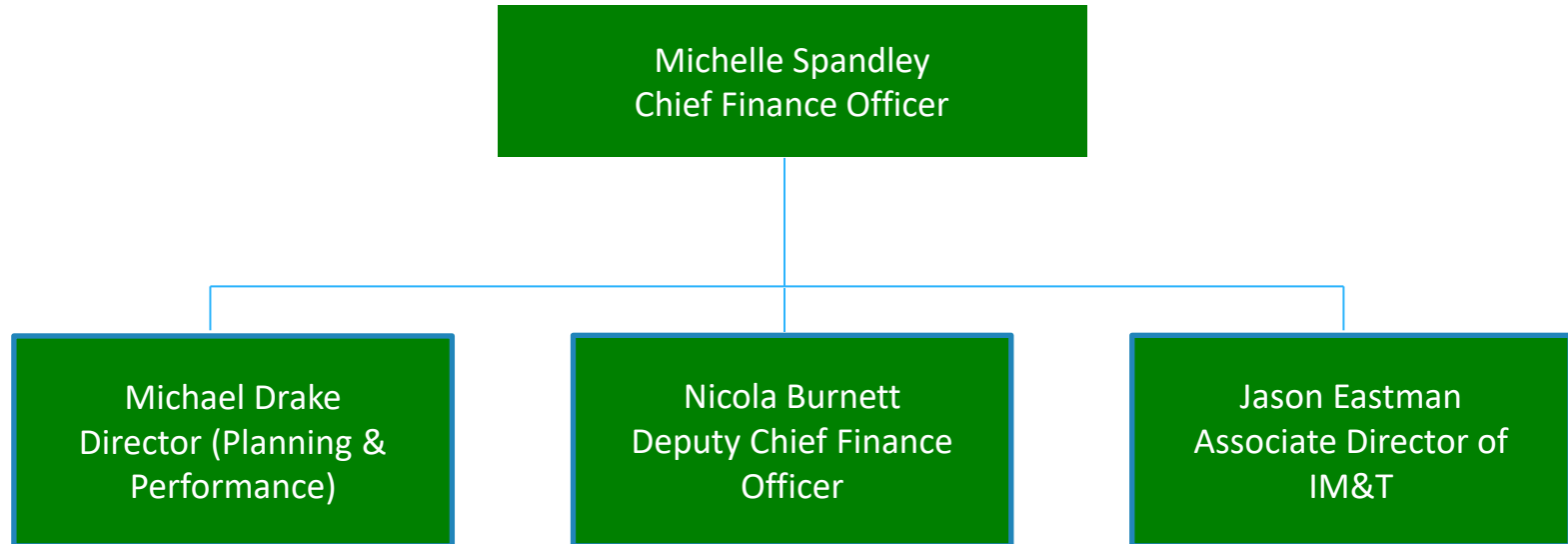
Medicines Optimisation



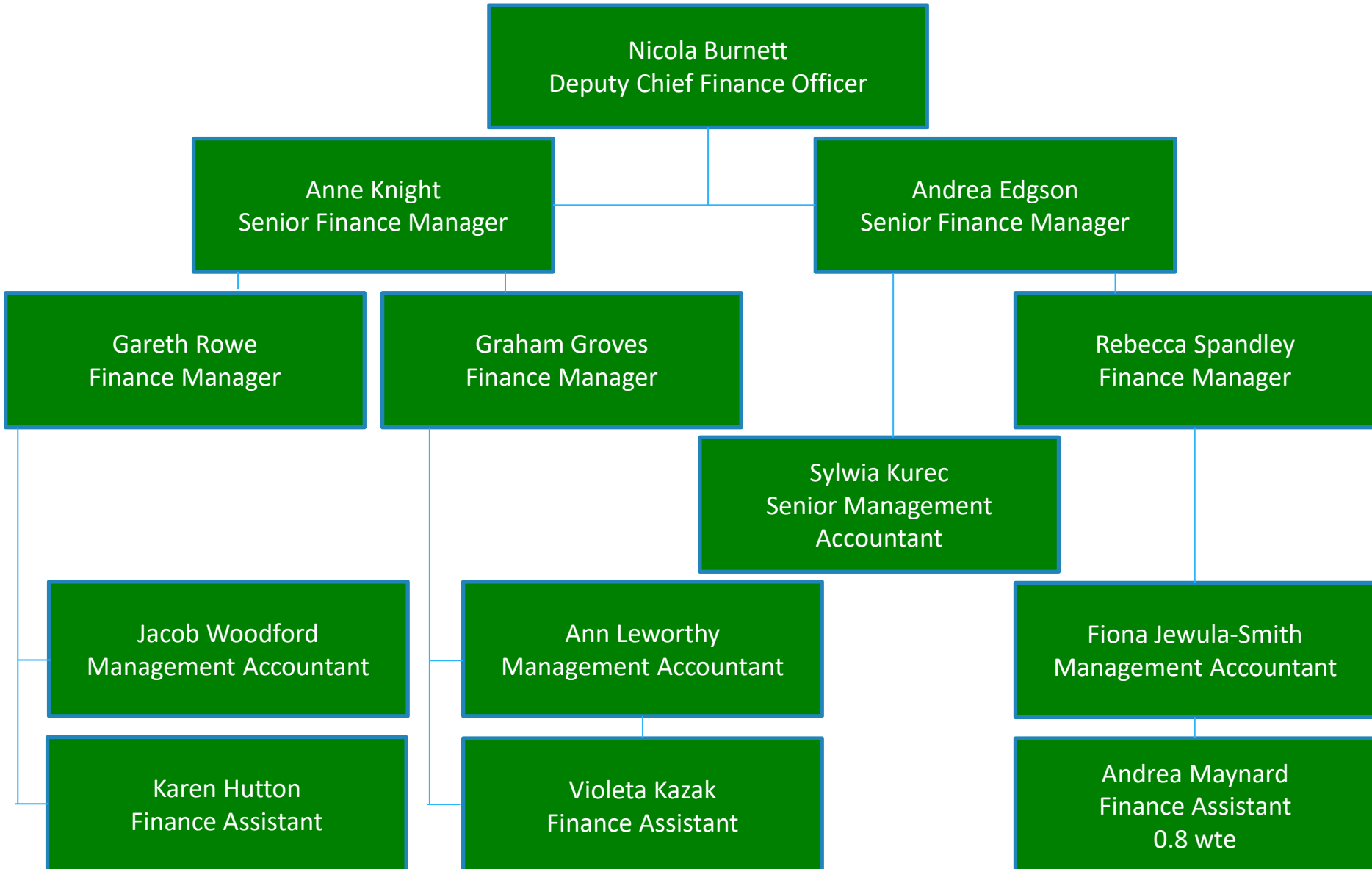
Primary Care



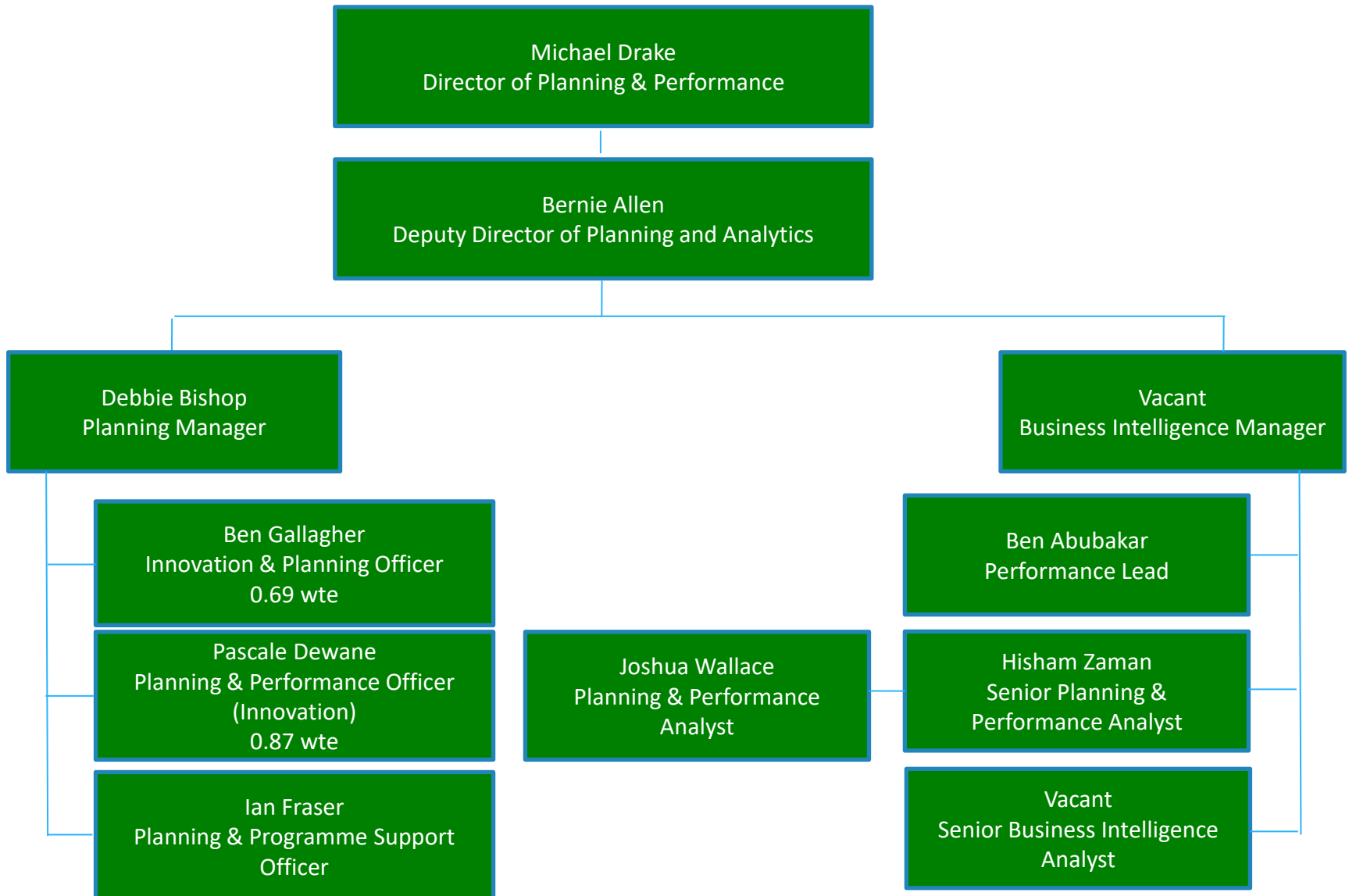
Chief Finance Officer



Finance Team



Planning & Performance Team



Managing Director

